



# Michigan Traffic Crash Facts

## Reporting Criteria

Please pay particular attention to the wording when interpreting the three levels of data gathered for this report.

### Crash

The Crash Level analyzes data related to crash events and returns one result per crash.

Examples: Time, weather, and location.

### Units

The Units Level analyzes the experience of the units in the crash and returns one result per vehicle, driver, pedestrian, bicyclist, or train.

Examples: Vehicle type, driver condition, and unit events.

### People

The People Level analyzes the experience of the people involved in the crash and returns one result per occupant/person/party.

Examples: Age, injury severity, and seat belt or helmet use.

### **KABCO Injury Indicator:**

K = Killed

A = Suspected Serious Injury

B = Suspected Minor Injury

C = Possible Injury

O = No Injury

Property Damage Only (PDO)



## Michigan State Police (MSP) Drivers Tested Positive for Cannabinoid Drugs

(Delta 9, Hashish Oil, Hashish, Marijuana/Marihuana, Marinol, Tetrahydrocannabinols, THC, or Cannabinoid, type unknown)

## 2017 Traffic Crash Data & 2013-2017 5-Year Trends

### Summary Trends

Year	Total Crashes	Fatal Crashes	Injury Crashes	Fatalities	Injuries
2013	78	70	6	86	71
2014	91	77	9	87	87
2015	102	97	2	109	83
2016	160	138	15	159	172
2017	169	131	26	144	156

### Sources:

The crashes in this report occurred on public roadways in Michigan and resulted in injuries, fatalities, or property damage (with \$1,000 as a reporting threshold). The information was gathered from Michigan Traffic Crash Report Forms (UD-10) submitted by local police departments, sheriff's offices, and the Michigan State Police. Other related information was obtained from the departments of Transportation, State, and Community Health.

This page left intentionally blank

## Cannabinoid Drug Experience

In 2017:

There were 174 drivers who tested positive for cannabinoid drug use involved in 169 motor vehicle crashes. Of those crashes, 131 were classified as fatal, resulting in 144 fatalities. An additional 156 persons were injured.

The highest number of motor vehicle crashes with drivers who tested positive for cannabinoid drug use (19) occurred in April and May, and the highest number of fatal crashes (17) and persons killed (19) occurred in May.

Michigan driver statistics indicate 6.5 percent of licensed drivers who tested positive for using cannabinoid drugs were age 16-20, and 16.7 percent of drivers who tested positive for using cannabinoid drugs in crashes were also in that age group.

## 2017 - Crashes and Injuries by Month

Month	Crashes				Persons	
	Total	Fatal	Injury	Property Damage Only (PDO)	Fatalities	Injuries
January	15	10	3	2	11	9
February	5	5	0	0	5	5
March	16	12	2	2	14	13
April	19	16	2	1	18	24
May	19	17	1	1	19	15
June	13	10	3	0	11	18
July	17	14	3	0	14	12
August	16	11	4	1	11	16
September	15	7	5	3	9	14
October	15	12	2	1	13	9
November	9	8	0	1	9	13
December	10	9	1	0	10	8
<b>Total</b>	<b>169</b>	<b>131</b>	<b>26</b>	<b>12</b>	<b>144</b>	<b>156</b>

## 2017 - Driver Statistics

Age Group	Statewide			Driver Rates	
	2016 Population*	Licensed Drivers	Drivers in Crashes	Per 10k Population	Per 10k Licensed
0 - 15	1,923,244	49,583	0	0.0	0.0
16 - 20	672,666	469,757	29	0.4	0.6
21 - 24	570,792	462,279	38	0.7	0.8
25 - 64	5,149,843	4,739,140	99	0.2	0.2
65 +	1,611,755	1,479,627	8	0.0	0.1
Unknown	0	0	0	--	--
<b>Total</b>	<b>9,928,300</b>	<b>7,200,386</b>	<b>174</b>	<b>0.2</b>	<b>0.2</b>

\*2017 Population of Michigan Counties (by single-year of age) not yet available from U.S. Census Bureau

## 2017 - Vehicles in Crashes

Vehicle Type	Motor Vehicles		Fatal Crashes		Injury Crashes	PDO Crashes
	Number of Vehicles	% of Total	Number	% of Total	Number	Number
Passenger car, SUV, van	130	74.7	100	73.5	21	9
Motor home	0	0.0	0	0.0	0	0
Pickup truck	26	14.9	19	14.0	5	2
Small truck under 10,000 lbs. GVWR	0	0.0	0	0.0	0	0
Motorcycle	11	6.3	11	8.1	0	0
Moped / goped	0	0.0	0	0.0	0	0
Go-cart / golf cart	0	0.0	0	0.0	0	0
Snowmobile	1	0.6	1	0.7	0	0
Off-Road Vehicle - ORV / All-Terrain Vehicle - ATV	2	1.1	2	1.5	0	0
Other	0	0.0	0	0.0	0	0
Truck/bus over 10,000 lbs.	4	2.3	3	2.2	0	1
Unknown	0	0.0	0	0.0	0	0
<b>Total</b>	<b>174</b>	<b>100.0</b>	<b>136</b>	<b>100.0</b>	<b>26</b>	<b>12</b>

## Drivers Tested Positive for Cannabinoid Drugs (continued)

### 5-Year Trend - Crashes by Month

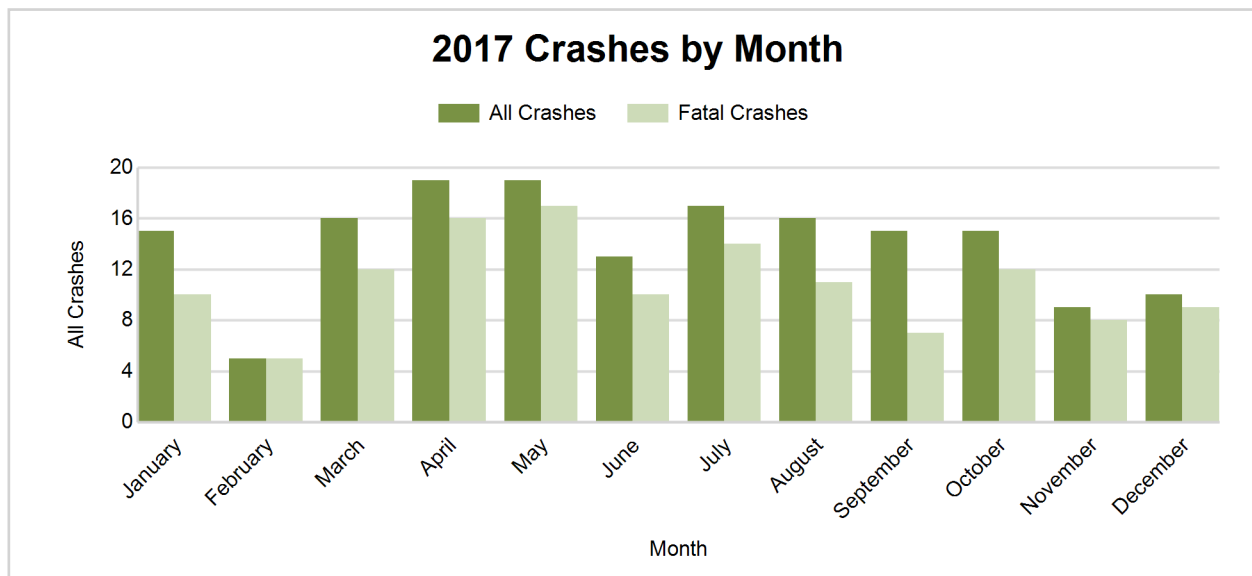
Month	2013		2014		2015		2016		2017	
	Total Crashes	Fatal Crashes	Total Crashes	Fatal Crashes	Total Crashes	Fatal Crashes	Total Crashes	Fatal Crashes	Total Crashes	Fatal Crashes
January	4	4	2	1	5	5	12	9	15	10
February	4	4	9	8	3	3	7	7	5	5
March	8	8	4	3	4	4	7	5	16	12
April	7	6	11	9	8	7	13	13	19	16
May	8	7	5	3	9	8	16	14	19	17
June	7	5	9	9	11	11	15	12	13	10
July	10	10	11	9	17	15	16	13	17	14
August	7	6	15	13	12	12	21	18	16	11
September	10	9	8	7	8	7	17	14	15	7
October	2	1	7	6	9	9	9	9	15	12
November	8	7	5	4	4	4	13	11	9	8
December	3	3	5	5	12	12	14	13	10	9
<b>Total</b>	<b>78</b>	<b>70</b>	<b>91</b>	<b>77</b>	<b>102</b>	<b>97</b>	<b>160</b>	<b>138</b>	<b>169</b>	<b>131</b>

Note: † Indicates that the highest number of total crashes reported in the 5-year period occurred in the same month

### 5-Year Trend - Crashes by Day of Week

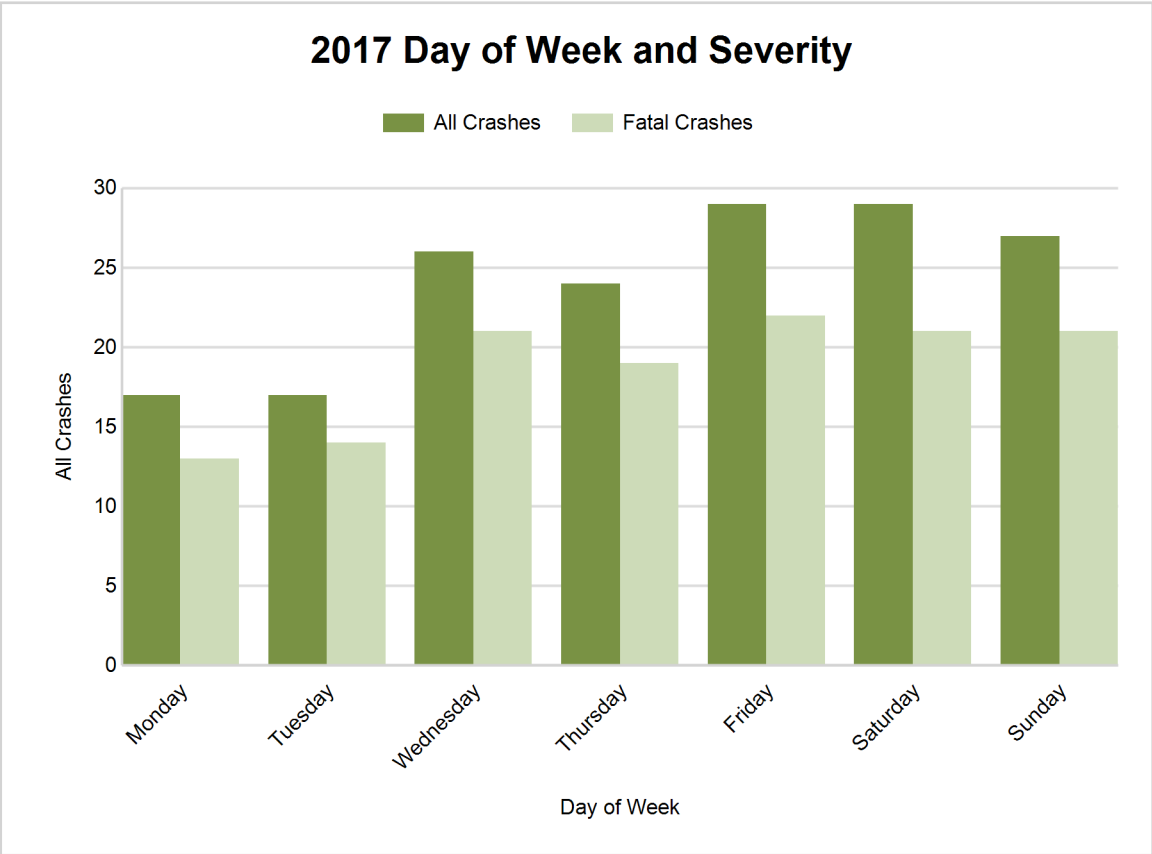
Day	2013		2014		2015		2016		2017	
	Total Crashes	Fatal Crashes	Total Crashes	Fatal Crashes	Total Crashes	Fatal Crashes	Total Crashes	Fatal Crashes	Total Crashes	Fatal Crashes
Monday	10	9	7	7	10	9	21	17	17	13
Tuesday	7	6	11	8	9	8	17	15	17	14
Wednesday	7	5	11	9	8	7	18	12	26	21
Thursday	5	4	10	9	19	18	19	16	24	19
Friday	17	15	16	13	19	19	26	23	29	22
Saturday	14	14	21	17	18	18	29	28	29	21
Sunday	18	17	15	14	19	18	30	27	27	21
<b>Total</b>	<b>78</b>	<b>70</b>	<b>91</b>	<b>77</b>	<b>102</b>	<b>97</b>	<b>160</b>	<b>138</b>	<b>169</b>	<b>131</b>

Note: † Indicates that the highest number of total crashes reported in the 5-year period occurred on the same day of the week



2017 - Crashes by Day of Week

Day	All Crashes		Fatal Crashes		Injury Crashes			PDO Crashes
	Number	% of Total	Number	% of Fatal	A	B	C	Number
Monday	17	10.1	13	9.9	1	1	2	0
Tuesday	17	10.1	14	10.7	2	0	0	1
Wednesday	26	15.4	21	16.0	1	2	0	2
Thursday	24	14.2	19	14.5	2	0	0	3
Friday	29	17.2	22	16.8	4	0	2	1
Saturday	29	17.2	21	16.0	3	2	0	3
Sunday	27	16.0	21	16.0	1	0	3	2
<b>Total</b>	<b>169</b>	<b>100.0</b>	<b>131</b>	<b>100.0</b>	<b>14</b>	<b>5</b>	<b>7</b>	<b>12</b>

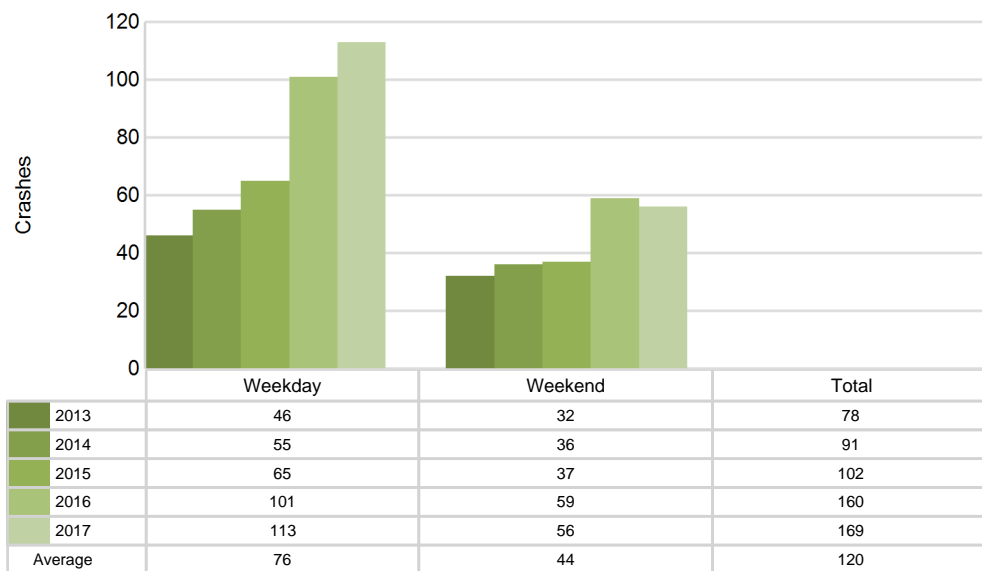


## Drivers Tested Positive for Cannabinoid Drugs (continued)

### 5-Year Trend - Crashes by Weekday and Weekend

Portion of Week	2013		2014		2015		2016		2017	
	Total Crashes	Fatal Crashes	Total Crashes	Fatal Crashes	Total Crashes	Fatal Crashes	Total Crashes	Fatal Crashes	Total Crashes	Fatal Crashes
Weekday	46	39	55	46	65	61	101	83	113	89
Weekend	32	31	36	31	37	36	59	55	56	42
<b>Total</b>	<b>78</b>	<b>70</b>	<b>91</b>	<b>77</b>	<b>102</b>	<b>97</b>	<b>160</b>	<b>138</b>	<b>169</b>	<b>131</b>

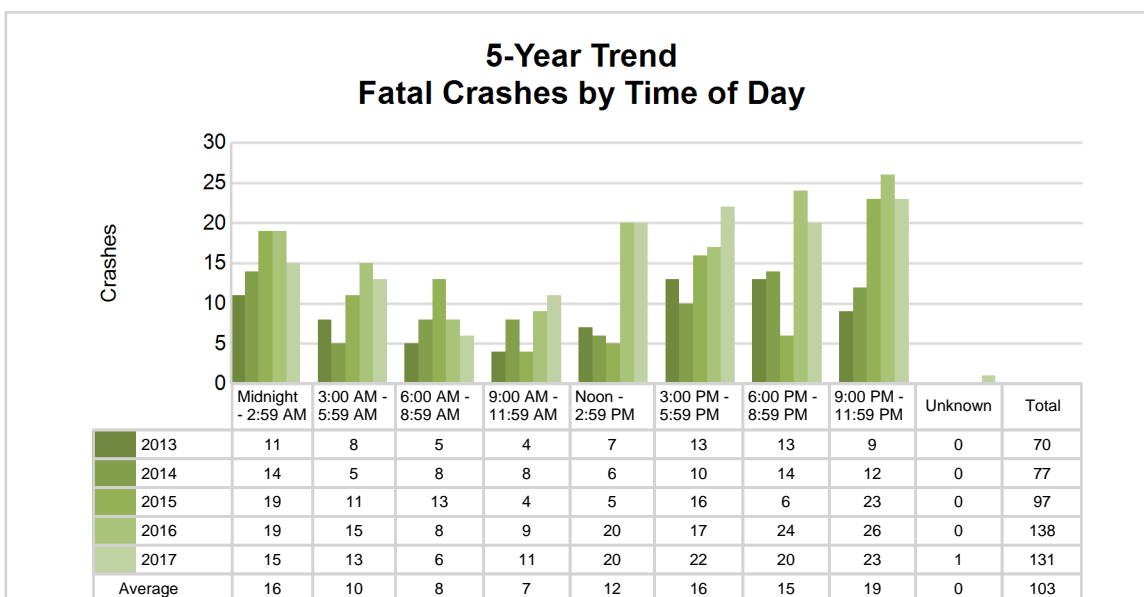
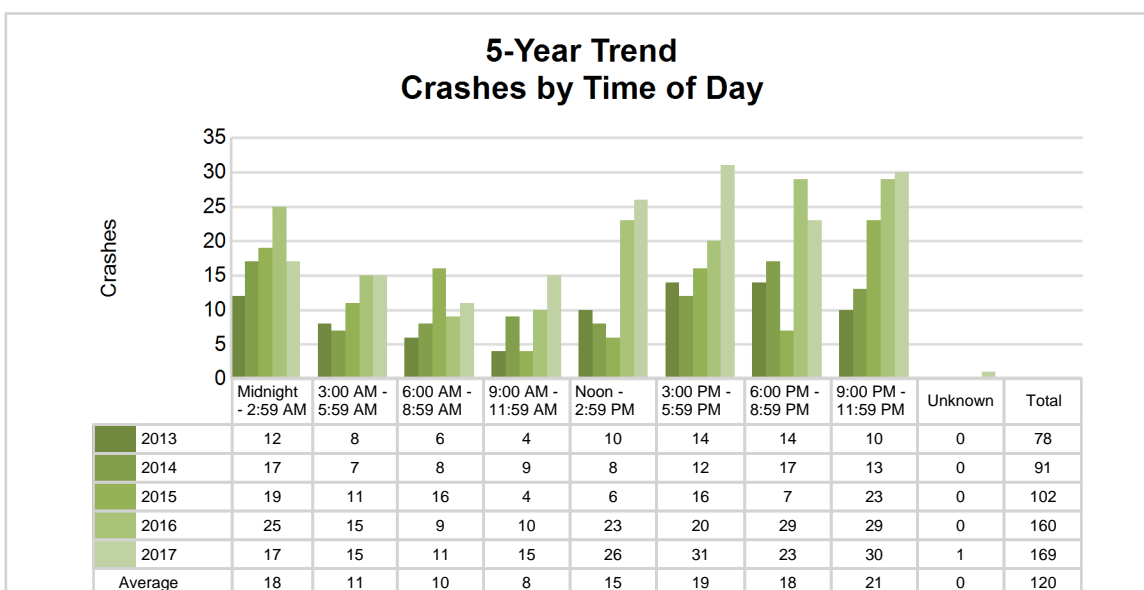
### 5-Year Crash Trends by Weekday (Monday - Friday) and Weekend (Saturday & Sunday)



## 5-Year Trend - Crashes by Time of Day

Time of Day	2013		2014		2015		2016		2017	
	Total Crashes	Fatal Crashes	Total Crashes	Fatal Crashes	Total Crashes	Fatal Crashes	Total Crashes	Fatal Crashes	Total Crashes	Fatal Crashes
Midnight - 2:59 AM	12	11	17	14	19	19	25	19	17	15
3:00 AM - 5:59 AM	8	8	7	5	11	11	15	15	15	13
6:00 AM - 8:59 AM	6	5	8	8	16	13	9	8	11	6
9:00 AM - 11:59 AM	4	4	9	8	4	4	10	9	15	11
Noon - 2:59 PM	10	7	8	6	6	5	23	20	26	20
3:00 PM - 5:59 PM	14	13	12	10	16	16	20	17	31	22
6:00 PM - 8:59 PM	14	13	17	14	7	6	29	24	23	20
9:00 PM - 11:59 PM	10	9	13	12	23	23	29	26	30	23
Unknown	0	0	0	0	0	0	0	0	1	1
<b>Total</b>	<b>78</b>	<b>70</b>	<b>91</b>	<b>77</b>	<b>102</b>	<b>97</b>	<b>160</b>	<b>138</b>	<b>169</b>	<b>131</b>

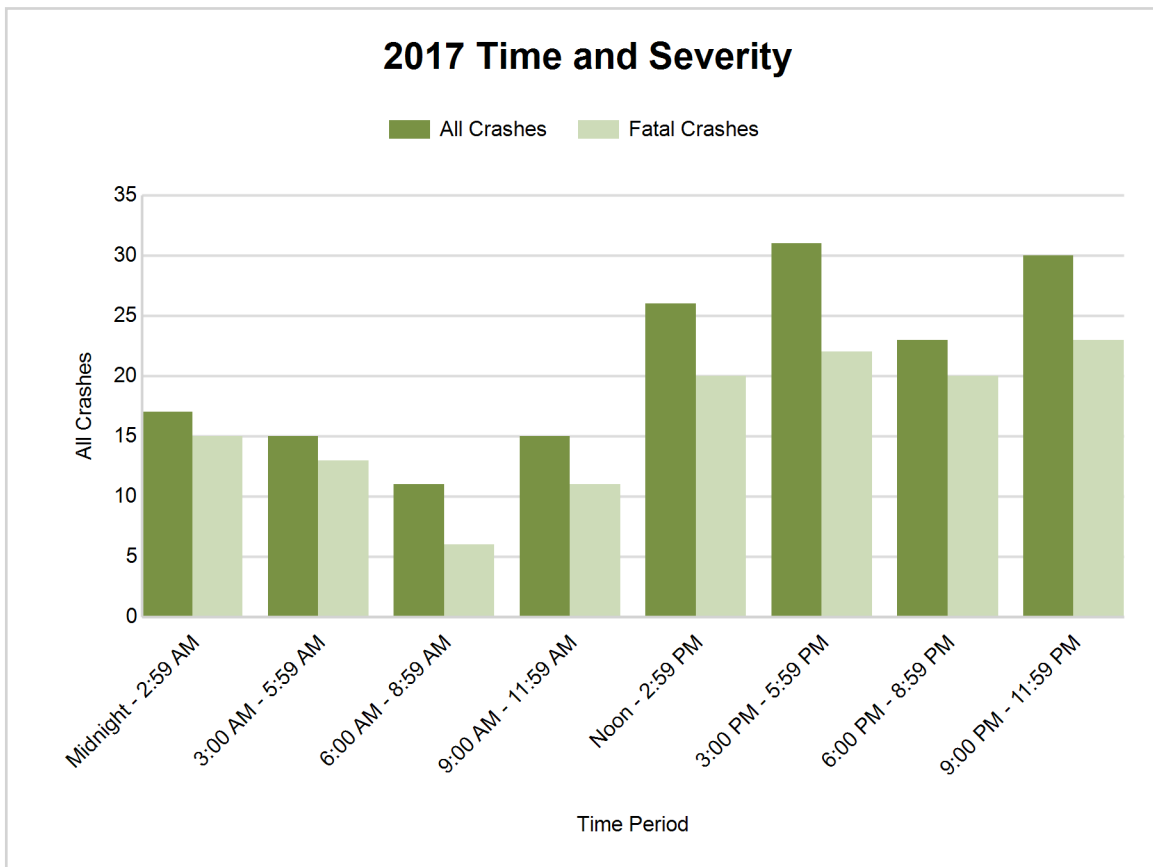
Note: † Indicates that the highest number of total crashes reported in the 5-year period occurred in the same time period



## Drivers Tested Positive for Cannabinoid Drugs (continued)

### 2017 - Time and Severity

Time of Day	All Crashes		Fatal Crashes		Injury Crashes			PDO Crashes
	Number	% of Total	Number	% of Fatal	A	B	C	Number
Midnight - 2:59 AM	17	10.1	15	11.5	2	0	0	0
3:00 AM - 5:59 AM	15	8.9	13	9.9	0	0	1	1
6:00 AM - 8:59 AM	11	6.5	6	4.6	1	2	0	2
9:00 AM - 11:59 AM	15	8.9	11	8.4	1	0	1	2
Noon - 2:59 PM	26	15.4	20	15.3	2	1	1	2
3:00 PM - 5:59 PM	31	18.3	22	16.8	4	1	2	2
6:00 PM - 8:59 PM	23	13.6	20	15.3	2	0	1	0
9:00 PM - 11:59 PM	30	17.8	23	17.6	2	1	1	3
Unknown	1	0.6	1	0.8	0	0	0	0
<b>Total</b>	<b>169</b>	<b>100.0</b>	<b>131</b>	<b>100.0</b>	<b>14</b>	<b>5</b>	<b>7</b>	<b>12</b>

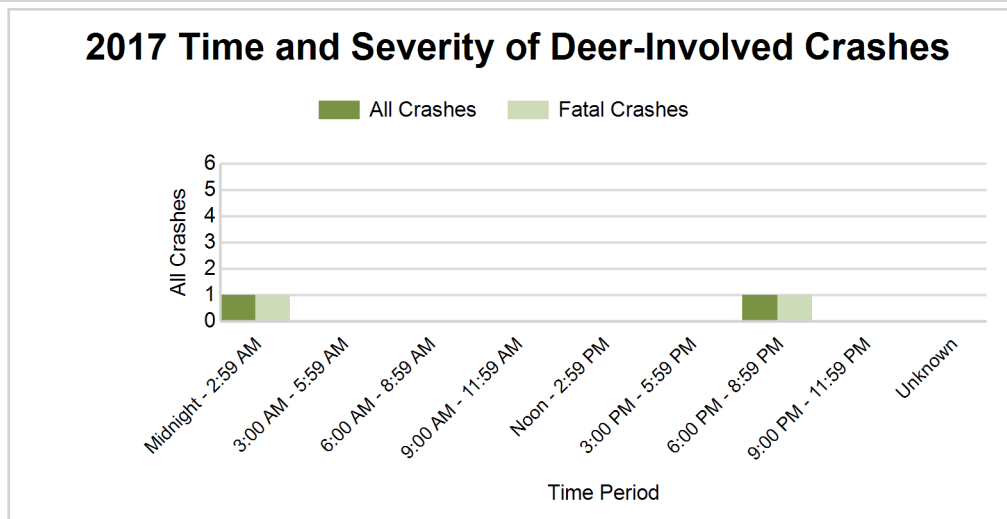
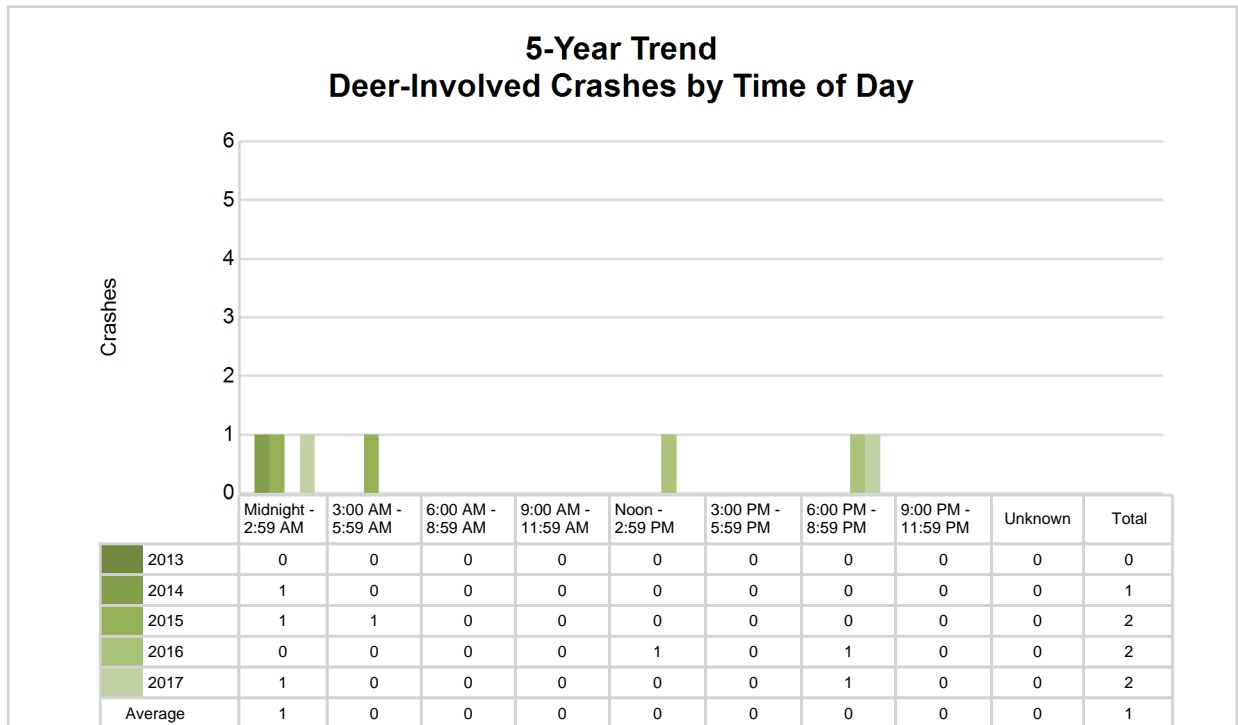




## 5-Year Trend - Deer-Involved Crashes by Time of Day

Time of Day	2013		2014		2015		2016		2017	
	Total Crashes	Fatal Crashes	Total Crashes	Fatal Crashes	Total Crashes	Fatal Crashes	Total Crashes	Fatal Crashes	Total Crashes	Fatal Crashes
Midnight - 2:59 AM	0	0	1	1	1	1	0	0	1	1
3:00 AM - 5:59 AM	0	0	0	0	1	1	0	0	0	0
6:00 AM - 8:59 AM	0	0	0	0	0	0	0	0	0	0
9:00 AM - 11:59 AM	0	0	0	0	0	0	0	0	0	0
Noon - 2:59 PM	0	0	0	0	0	0	1	1	0	0
3:00 PM - 5:59 PM	0	0	0	0	0	0	0	0	0	0
6:00 PM - 8:59 PM	0	0	0	0	0	0	1	1	1	1
9:00 PM - 11:59 PM	0	0	0	0	0	0	0	0	0	0
Unknown	0	0	0	0	0	0	0	0	0	0
<b>Total</b>	<b>0</b>	<b>0</b>	<b>1</b>	<b>1</b>	<b>2</b>	<b>2</b>	<b>2</b>	<b>2</b>	<b>2</b>	<b>2</b>

Note: † Indicates that the highest number of total crashes reported in the 5-year period occurred in the same time period





# Drivers Tested Positive for Cannabinoid Drugs (continued)

## 2013 - Reported Motor Vehicle Crashes by County (continued)

County	Crashes											Persons	
	Total	Fatal	Injury	Property Damage	Interstate	US Route	State Route	Local Street	Alcohol-Involved	Drug-Involved	Deer-Involved	Fatalities	Injuries
Lake	0	0	0	0	0	0	0	0	0	0	0	0	0
Lapeer	3	3	0	0	1	0	1	1	2	3	0	4	3
Leelanau	0	0	0	0	0	0	0	0	0	0	0	0	0
Lenawee	1	1	0	0	0	0	0	1	1	1	0	2	0
Livingston	1	1	0	0	0	0	0	1	1	1	0	1	0
Luce	0	0	0	0	0	0	0	0	0	0	0	0	0
Mackinac	0	0	0	0	0	0	0	0	0	0	0	0	0
Macomb	3	3	0	0	0	0	1	2	1	3	0	4	5
Manistee	2	1	1	0	0	1	0	1	1	2	0	1	3
Marquette	0	0	0	0	0	0	0	0	0	0	0	0	0
Mason	0	0	0	0	0	0	0	0	0	0	0	0	0
Mecosta	1	1	0	0	0	0	0	1	0	1	0	1	0
Menominee	1	1	0	0	0	0	0	1	1	1	0	2	0
Midland	0	0	0	0	0	0	0	0	0	0	0	0	0
Missaukee	0	0	0	0	0	0	0	0	0	0	0	0	0
Monroe	2	2	0	0	0	1	1	0	1	2	0	2	2
Montcalm	0	0	0	0	0	0	0	0	0	0	0	0	0
Montmorency	2	2	0	0	0	0	1	1	1	2	0	2	0
Muskegon	0	0	0	0	0	0	0	0	0	0	0	0	0
Newaygo	0	0	0	0	0	0	0	0	0	0	0	0	0
Oakland	6	6	0	0	3	2	0	1	0	6	0	7	2
Oceana	0	0	0	0	0	0	0	0	0	0	0	0	0
Ogemaw	0	0	0	0	0	0	0	0	0	0	0	0	0
Ontonagon	0	0	0	0	0	0	0	0	0	0	0	0	0
Osceola	0	0	0	0	0	0	0	0	0	0	0	0	0
Oscoda	0	0	0	0	0	0	0	0	0	0	0	0	0
Otsego	1	1	0	0	0	0	1	0	0	1	0	1	0
Ottawa	0	0	0	0	0	0	0	0	0	0	0	0	0
Presque Isle	0	0	0	0	0	0	0	0	0	0	0	0	0
Roscommon	1	1	0	0	0	0	0	1	1	1	0	1	0
Saginaw	2	2	0	0	0	0	0	2	1	2	0	2	2
St. Clair	2	2	0	0	0	0	1	1	2	2	0	3	1
St. Joseph	1	1	0	0	0	0	0	1	1	1	0	1	1
Sanilac	0	0	0	0	0	0	0	0	0	0	0	0	0
Schoolcraft	1	0	1	0	0	1	0	0	0	1	0	0	2
Shiawassee	1	1	0	0	0	0	0	1	0	1	0	2	4
Tuscola	0	0	0	0	0	0	0	0	0	0	0	0	0
Van Buren	1	1	0	0	0	0	0	1	0	1	0	4	1
Washtenaw	2	2	0	0	1	0	0	1	1	2	0	2	1
Wayne	9	8	0	1	3	0	1	5	5	9	0	10	13
Wexford	2	2	0	0	0	0	1	1	1	2	0	2	1
<b>Total</b>	<b>78</b>	<b>70</b>	<b>6</b>	<b>2</b>	<b>10</b>	<b>10</b>	<b>16</b>	<b>42</b>	<b>40</b>	<b>77</b>	<b>0</b>	<b>86</b>	<b>71</b>



# Drivers Tested Positive for Cannabinoid Drugs (continued)

## 2014 - Reported Motor Vehicle Crashes by County (continued)

County	Crashes											Persons	
	Total	Fatal	Injury	Property Damage	Interstate	US Route	State Route	Local Street	Alcohol-Involved	Drug-Involved	Deer-Involved	Fatalities	Injuries
Lake	2	2	0	0	0	2	0	0	1	2	0	2	2
Lapeer	2	2	0	0	0	0	1	1	2	2	0	2	1
Leelanau	1	1	0	0	0	0	0	1	0	1	0	2	2
Lenawee	0	0	0	0	0	0	0	0	0	0	0	0	0
Livingston	4	4	0	0	0	1	0	3	3	4	0	4	0
Luce	0	0	0	0	0	0	0	0	0	0	0	0	0
Mackinac	0	0	0	0	0	0	0	0	0	0	0	0	0
Macomb	7	4	2	1	0	0	3	4	4	7	0	4	6
Manistee	0	0	0	0	0	0	0	0	0	0	0	0	0
Marquette	1	1	0	0	0	0	1	0	1	1	0	1	1
Mason	0	0	0	0	0	0	0	0	0	0	0	0	0
Mecosta	0	0	0	0	0	0	0	0	0	0	0	0	0
Menominee	0	0	0	0	0	0	0	0	0	0	0	0	0
Midland	0	0	0	0	0	0	0	0	0	0	0	0	0
Missaukee	0	0	0	0	0	0	0	0	0	0	0	0	0
Monroe	6	4	2	0	1	1	0	4	5	6	0	4	3
Montcalm	4	4	0	0	0	0	0	4	0	3	0	5	3
Montmorency	0	0	0	0	0	0	0	0	0	0	0	0	0
Muskegon	4	4	0	0	1	0	1	2	1	4	0	7	10
Newaygo	1	1	0	0	0	0	0	1	0	1	0	1	7
Oakland	5	5	0	0	0	0	1	4	3	5	0	5	3
Oceana	0	0	0	0	0	0	0	0	0	0	0	0	0
Ogemaw	0	0	0	0	0	0	0	0	0	0	0	0	0
Ontonagon	0	0	0	0	0	0	0	0	0	0	0	0	0
Osceola	0	0	0	0	0	0	0	0	0	0	0	0	0
Oscoda	0	0	0	0	0	0	0	0	0	0	0	0	0
Otsego	0	0	0	0	0	0	0	0	0	0	0	0	0
Ottawa	1	1	0	0	1	0	0	0	1	1	0	1	1
Presque Isle	0	0	0	0	0	0	0	0	0	0	0	0	0
Roscommon	1	1	0	0	0	0	0	1	0	1	0	1	0
Saginaw	2	2	0	0	0	0	0	2	2	2	1	2	0
St. Clair	2	2	0	0	0	0	1	1	0	2	0	2	4
St. Joseph	0	0	0	0	0	0	0	0	0	0	0	0	0
Sanilac	0	0	0	0	0	0	0	0	0	0	0	0	0
Schoolcraft	0	0	0	0	0	0	0	0	0	0	0	0	0
Shiawassee	0	0	0	0	0	0	0	0	0	0	0	0	0
Tuscola	0	0	0	0	0	0	0	0	0	0	0	0	0
Van Buren	1	1	0	0	0	0	0	1	1	1	0	1	0
Washtenaw	3	3	0	0	0	1	0	2	2	3	0	4	3
Wayne	9	5	2	2	2	0	2	5	3	9	0	5	9
Wexford	0	0	0	0	0	0	0	0	0	0	0	0	0
<b>Total</b>	<b>91</b>	<b>77</b>	<b>9</b>	<b>5</b>	<b>8</b>	<b>9</b>	<b>18</b>	<b>56</b>	<b>40</b>	<b>89</b>	<b>1</b>	<b>87</b>	<b>87</b>



# Drivers Tested Positive for Cannabinoid Drugs (continued)

## 2015 - Reported Motor Vehicle Crashes by County (continued)

County	Crashes											Persons	
	Total	Fatal	Injury	Property Damage	Interstate	US Route	State Route	Local Street	Alcohol-Involved	Drug-Involved	Deer-Involved	Fatalities	Injuries
Lake	0	0	0	0	0	0	0	0	0	0	0	0	0
Lapeer	2	2	0	0	0	0	0	2	1	2	0	2	0
Leelanau	0	0	0	0	0	0	0	0	0	0	0	0	0
Lenawee	0	0	0	0	0	0	0	0	0	0	0	0	0
Livingston	1	1	0	0	0	0	0	1	0	1	0	1	2
Luce	0	0	0	0	0	0	0	0	0	0	0	0	0
Mackinac	0	0	0	0	0	0	0	0	0	0	0	0	0
Macomb	9	9	0	0	2	0	3	4	5	9	0	9	10
Manistee	0	0	0	0	0	0	0	0	0	0	0	0	0
Marquette	0	0	0	0	0	0	0	0	0	0	0	0	0
Mason	1	1	0	0	0	0	0	1	1	1	0	2	0
Mecosta	0	0	0	0	0	0	0	0	0	0	0	0	0
Menominee	0	0	0	0	0	0	0	0	0	0	0	0	0
Midland	2	2	0	0	0	0	0	2	2	2	0	3	1
Missaukee	2	2	0	0	0	0	0	2	0	2	0	3	3
Monroe	4	2	1	1	1	0	0	3	2	4	0	2	2
Montcalm	0	0	0	0	0	0	0	0	0	0	0	0	0
Montmorency	0	0	0	0	0	0	0	0	0	0	0	0	0
Muskegon	0	0	0	0	0	0	0	0	0	0	0	0	0
Newaygo	1	1	0	0	0	0	0	1	0	1	0	1	2
Oakland	4	4	0	0	1	0	1	2	3	4	0	4	1
Oceana	0	0	0	0	0	0	0	0	0	0	0	0	0
Ogemaw	0	0	0	0	0	0	0	0	0	0	0	0	0
Ontonagon	0	0	0	0	0	0	0	0	0	0	0	0	0
Osceola	1	1	0	0	0	1	0	0	1	1	0	1	3
Oscoda	0	0	0	0	0	0	0	0	0	0	0	0	0
Otsego	0	0	0	0	0	0	0	0	0	0	0	0	0
Ottawa	2	2	0	0	0	1	0	1	0	2	0	2	2
Presque Isle	0	0	0	0	0	0	0	0	0	0	0	0	0
Roscommon	0	0	0	0	0	0	0	0	0	0	0	0	0
Saginaw	3	3	0	0	2	0	0	1	1	3	0	3	1
St. Clair	3	3	0	0	0	0	2	1	2	2	0	3	3
St. Joseph	0	0	0	0	0	0	0	0	0	0	0	0	0
Sanilac	0	0	0	0	0	0	0	0	0	0	0	0	0
Schoolcraft	0	0	0	0	0	0	0	0	0	0	0	0	0
Shiawassee	1	1	0	0	0	0	0	1	1	1	0	1	0
Tuscola	0	0	0	0	0	0	0	0	0	0	0	0	0
Van Buren	1	1	0	0	0	0	0	1	0	1	0	1	0
Washtenaw	4	4	0	0	1	0	0	3	1	4	0	4	1
Wayne	16	14	0	2	1	1	6	8	8	15	0	16	11
Wexford	1	1	0	0	0	0	0	1	0	1	0	1	0
<b>Total</b>	<b>102</b>	<b>97</b>	<b>2</b>	<b>3</b>	<b>14</b>	<b>10</b>	<b>16</b>	<b>62</b>	<b>46</b>	<b>94</b>	<b>2</b>	<b>109</b>	<b>83</b>





# Drivers Tested Positive for Cannabinoid Drugs (continued)

## 2016 - Reported Motor Vehicle Crashes by County (continued)

County	Crashes											Persons	
	Total	Fatal	Injury	Property Damage	Interstate	US Route	State Route	Local Street	Alcohol-Involved	Drug-Involved	Deer-Involved	Fatalities	Injuries
Lake	0	0	0	0	0	0	0	0	0	0	0	0	0
Lapeer	1	1	0	0	0	0	0	1	1	1	0	1	0
Leelanau	1	1	0	0	0	0	1	0	0	1	0	3	2
Lenawee	4	4	0	0	0	2	0	2	0	4	0	5	0
Livingston	7	7	0	0	2	0	0	5	2	7	0	7	4
Luce	1	1	0	0	0	0	0	1	0	1	0	1	0
Mackinac	0	0	0	0	0	0	0	0	0	0	0	0	0
Macomb	8	8	0	0	1	0	4	3	4	8	0	8	10
Manistee	0	0	0	0	0	0	0	0	0	0	0	0	0
Marquette	1	1	0	0	0	1	0	0	1	1	0	1	2
Mason	1	1	0	0	0	1	0	0	0	1	1	1	1
Mecosta	0	0	0	0	0	0	0	0	0	0	0	0	0
Menominee	0	0	0	0	0	0	0	0	0	0	0	0	0
Midland	1	1	0	0	0	0	0	1	0	1	0	1	0
Missaukee	1	1	0	0	0	0	0	1	0	1	0	1	0
Monroe	9	1	6	2	2	0	0	7	5	9	0	2	9
Montcalm	0	0	0	0	0	0	0	0	0	0	0	0	0
Montmorency	0	0	0	0	0	0	0	0	0	0	0	0	0
Muskegon	3	2	1	0	0	1	1	1	1	3	0	2	8
Newaygo	0	0	0	0	0	0	0	0	0	0	0	0	0
Oakland	9	8	1	0	2	1	0	6	4	9	0	8	11
Oceana	0	0	0	0	0	0	0	0	0	0	0	0	0
Ogemaw	3	3	0	0	0	0	1	2	1	3	0	4	5
Ontonagon	2	1	0	1	0	1	0	1	2	2	0	1	0
Osceola	0	0	0	0	0	0	0	0	0	0	0	0	0
Oscoda	1	1	0	0	0	0	0	1	1	1	0	1	1
Otsego	0	0	0	0	0	0	0	0	0	0	0	0	0
Ottawa	4	3	1	0	1	1	1	1	1	4	0	4	4
Presque Isle	0	0	0	0	0	0	0	0	0	0	0	0	0
Roscommon	0	0	0	0	0	0	0	0	0	0	0	0	0
Saginaw	4	3	1	0	0	0	1	3	2	4	0	5	6
St. Clair	1	1	0	0	0	0	0	1	0	1	0	1	1
St. Joseph	2	2	0	0	0	2	0	0	0	2	0	2	3
Sanilac	1	1	0	0	0	0	0	1	0	1	0	1	0
Schoolcraft	0	0	0	0	0	0	0	0	0	0	0	0	0
Shiawassee	2	2	0	0	0	0	1	1	1	2	0	2	2
Tuscola	0	0	0	0	0	0	0	0	0	0	0	0	0
Van Buren	3	3	0	0	1	0	2	0	0	3	0	4	4
Washtenaw	4	4	0	0	0	3	0	1	0	4	0	5	2
Wayne	29	26	1	2	2	1	5	21	16	29	0	31	34
Wexford	3	3	0	0	0	0	1	2	0	3	0	3	4
<b>Total</b>	<b>160</b>	<b>138</b>	<b>15</b>	<b>7</b>	<b>14</b>	<b>17</b>	<b>31</b>	<b>98</b>	<b>58</b>	<b>160</b>	<b>2</b>	<b>159</b>	<b>172</b>



# Drivers Tested Positive for Cannabinoid Drugs (continued)

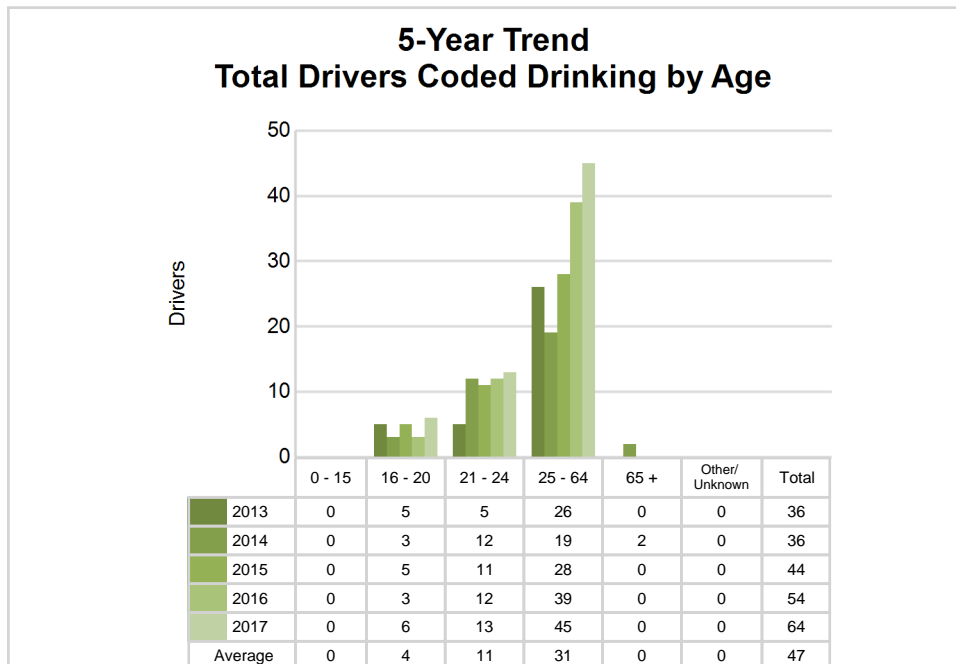
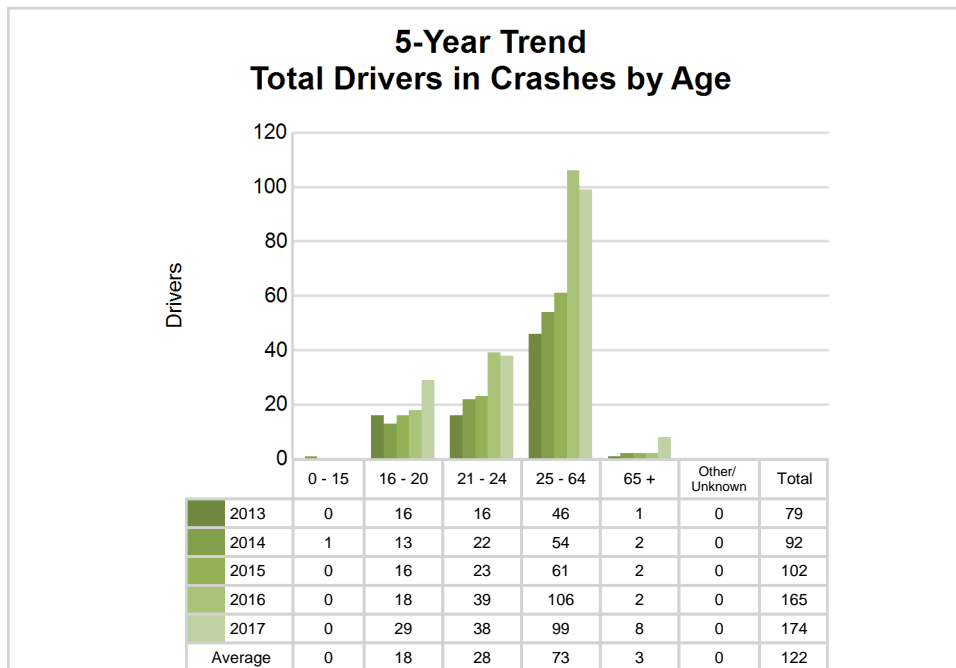
## 2017 - Reported Motor Vehicle Crashes by County (continued)

County	Crashes											Persons	
	Total	Fatal	Injury	Property Damage	Interstate	US Route	State Route	Local Street	Alcohol-Involved	Drug-Involved	Deer-Involved	Fatalities	Injuries
Lake	0	0	0	0	0	0	0	0	0	0	0	0	0
Lapeer	2	2	0	0	0	0	0	2	1	2	1	2	0
Leelanau	0	0	0	0	0	0	0	0	0	0	0	0	0
Lenawee	3	2	1	0	0	0	1	2	2	3	0	2	4
Livingston	4	3	1	0	1	0	1	2	0	4	0	3	3
Luce	1	1	0	0	0	0	0	1	1	1	0	1	0
Mackinac	2	1	1	0	0	0	0	1	2	2	0	1	2
Macomb	2	2	0	0	0	0	0	2	1	2	0	2	2
Manistee	0	0	0	0	0	0	0	0	0	0	0	0	0
Marquette	0	0	0	0	0	0	0	0	0	0	0	0	0
Mason	5	4	1	0	0	3	0	2	2	5	1	4	1
Mecosta	0	0	0	0	0	0	0	0	0	0	0	0	0
Menominee	0	0	0	0	0	0	0	0	0	0	0	0	0
Midland	5	5	0	0	0	1	0	4	2	5	0	6	5
Missaukee	0	0	0	0	0	0	0	0	0	0	0	0	0
Monroe	6	3	2	1	0	0	1	5	5	6	0	4	2
Montcalm	1	1	0	0	0	0	1	0	0	1	0	1	0
Montmorency	0	0	0	0	0	0	0	0	0	0	0	0	0
Muskegon	4	4	0	0	0	0	1	3	2	4	0	5	3
Newaygo	0	0	0	0	0	0	0	0	0	0	0	0	0
Oakland	11	11	0	0	2	0	2	7	5	11	0	12	3
Oceana	0	0	0	0	0	0	0	0	0	0	0	0	0
Ogemaw	1	1	0	0	0	0	0	1	1	1	0	1	0
Ontonagon	0	0	0	0	0	0	0	0	0	0	0	0	0
Osceola	0	0	0	0	0	0	0	0	0	0	0	0	0
Oscoda	0	0	0	0	0	0	0	0	0	0	0	0	0
Otsego	1	1	0	0	0	0	1	0	0	1	0	1	0
Ottawa	3	2	1	0	0	1	0	2	2	3	0	2	2
Presque Isle	0	0	0	0	0	0	0	0	0	0	0	0	0
Roscommon	0	0	0	0	0	0	0	0	0	0	0	0	0
Saginaw	4	3	0	1	0	0	0	4	0	4	0	3	3
St. Clair	0	0	0	0	0	0	0	0	0	0	0	0	0
St. Joseph	3	3	0	0	0	0	3	0	2	3	0	3	3
Sanilac	2	2	0	0	0	0	2	0	1	2	0	2	3
Schoolcraft	0	0	0	0	0	0	0	0	0	0	0	0	0
Shiawassee	2	2	0	0	0	0	0	2	2	2	0	2	1
Tuscola	2	2	0	0	0	0	1	1	1	2	0	2	1
Van Buren	3	3	0	0	0	0	0	3	2	3	0	4	2
Washtenaw	8	8	0	0	3	1	0	4	4	8	0	9	5
Wayne	28	17	5	6	4	0	6	18	11	28	0	19	30
Wexford	1	1	0	0	0	0	1	0	0	1	0	2	2
<b>Total</b>	<b>169</b>	<b>131</b>	<b>26</b>	<b>12</b>	<b>15</b>	<b>13</b>	<b>38</b>	<b>102</b>	<b>76</b>	<b>169</b>	<b>2</b>	<b>144</b>	<b>156</b>

# Drivers Tested Positive for Cannabinoid Drugs (continued)

## 5-Year Trend - Drivers in Crashes Coded Drinking by Driver Age

Driver Age	2013		2014		2015		2016		2017	
	Total Drivers in Crashes	Total Drivers Coded Drinking	Total Drivers in Crashes	Total Drivers Coded Drinking	Total Drivers in Crashes	Total Drivers Coded Drinking	Total Drivers in Crashes	Total Drivers Coded Drinking	Total Drivers in Crashes	Total Drivers Coded Drinking
0 - 15	0	0	1	0	0	0	0	0	0	0
16 - 20	16	5	13	3	16	5	18	3	29	6
21 - 24	16	5	22	12	23	11	39	12	38	13
25 - 64	46	26	54	19	61	28	106	39	99	45
65 +	1	0	2	2	2	0	2	0	8	0
Unknown	0	0	0	0	0	0	0	0	0	0
<b>Total</b>	<b>79</b>	<b>36</b>	<b>92</b>	<b>36</b>	<b>102</b>	<b>44</b>	<b>165</b>	<b>54</b>	<b>174</b>	<b>64</b>



## 2017 - Bodily Alcohol Concentration (BAC) Results Among All Vehicle Drivers in Alcohol-Involved Crashes by Age

Age Group	Drivers				BAC Result Range for Drivers Coded Drinking				
	Total Drivers in Alcohol-Involved Crashes	Total Drivers Tested in all Crashes	Total Drivers Coded Drinking, Tested	Total Drivers Coded Drinking	BAC = 0.00	BAC 0.01 g/dL to 0.07 g/dL	BAC 0.08 g/dL to 0.16 g/dL	BAC 0.17 g/dL and Above	BAC Not Reported
0 - 15	0	0	0	0	0	0	0	0	0
16 - 20	8	21	6	6	0	3	1	2	0
21 - 24	19	33	13	13	0	4	6	3	0
25 - 64	51	88	43	45	1	12	13	19	0
65 +	1	8	0	0	0	0	0	0	0
Unknown	0	0	0	0	0	0	0	0	0
<b>Total</b>	<b>79</b>	<b>150</b>	<b>62</b>	<b>64</b>	<b>1</b>	<b>19</b>	<b>20</b>	<b>24</b>	<b>0</b>

Notes: BAC measured in grams (g) per deciliter (dL).

BAC may not be reported if drivers are not tested or if the results are not available immediately (as in the case of a blood test).

A driver may be coded by the officer as drinking even though no test is administered.

## Alcohol-Involved Crashes

In 2017, there were 79 drivers using drugs in alcohol-involved crashes; 64 (81.0%) of those drivers were coded as had-been-drinking by the officer on the crash form.

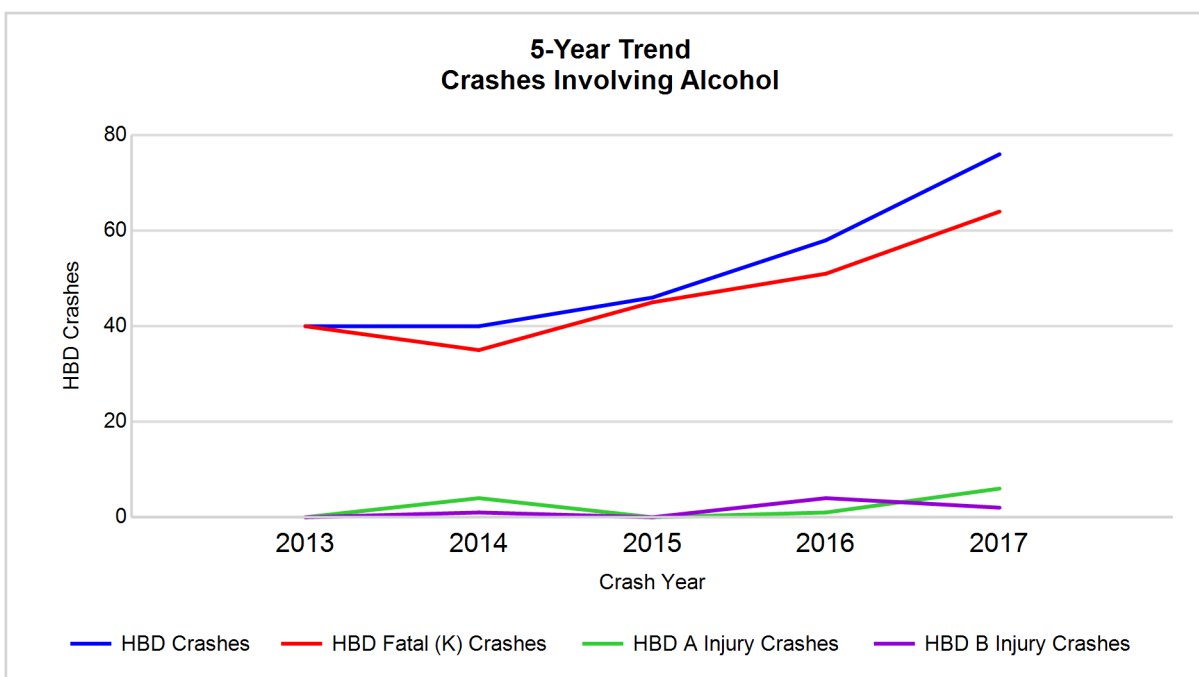
- 44 (68.8%) of the 64 drivers had a blood alcohol concentration (BAC) of 0.08 g/dL (grams per deciliter) or greater, and 24 (54.5%) of the 44 drivers had a BAC at or above 0.17 g/dL.
- 62 (96.9%) of the 64 drivers were coded as had-been-drinking and were tested for alcohol consumption.

## 5-Year Trend - Crashes Involving Alcohol

Year	All Crashes	HBD Crashes	% HBD	Fatal Crashes	HBD Fatal Crashes	% HBD	A Injury Crashes	HBD A Injury Crashes	% HBD	B Injury Crashes	HBD B Injury Crashes	% HBD
2013	78	40	51.3	70	40	57.1	1	0	0.0	3	0	0.0
2014	91	40	44.0	77	35	45.5	6	4	66.7	2	1	50.0
2015	102	46	45.1	97	45	46.4	1	0	0.0	1	0	0.0
2016	160	58	36.3	138	51	37.0	4	1	25.0	7	4	57.1
2017	169**	76**	45.0	131	64**	48.9	14**	6**	42.9	5	2	40.0

Note: \* Indicates that the most recent year is the lowest number or percentage reported in the 5-year period in that column

\*\* Indicates that the most recent year is the highest number or percentage reported in the 5-year period in that column



Note: Had-Been-Drinking (HBD)

## Drivers Tested Positive for Cannabinoid Drugs (continued)

### 2017 - Restraints Worn Among Vehicle Drivers and Injured Passengers by Vehicle Type

Vehicle Type	Total Occupants			Fatalities			A - Suspected Serious			B - Suspected Minor			C - Possible Injury			No Injury		
	Total	Used Restraint	%	Total	Used Restraint	%	Total	Used Restraint	%	Total	Used Restraint	%	Total	Used Restraint	%	Total	Used Restraint	%
Passenger car, SUV, van	270	186	68.9	95	49	51.6	44	34	77.3	37	28	75.7	40	32	80.0	47	43	91.5
Motor home	0	0	0.0	0	0	0.0	0	0	0.0	0	0	0.0	0	0	0.0	0	0	0.0
Pickup truck	43	29	67.4	13	8	61.5	8	3	37.5	5	4	80.0	6	6	100.0	10	8	80.0
Small truck under 10,000 lbs. GVWR	2	2	100.0	0	0	0.0	2	2	100.0	0	0	0.0	0	0	0.0	0	0	0.0
Motorcycle	19	10	52.6	16	8	50.0	3	2	66.7	0	0	0.0	0	0	0.0	0	0	0.0
Moped / goped	1	0	0.0	1	0	0.0	0	0	0.0	0	0	0.0	0	0	0.0	0	0	0.0
Go-cart / golf cart	0	0	0.0	0	0	0.0	0	0	0.0	0	0	0.0	0	0	0.0	0	0	0.0
Snowmobile	1	0	0.0	1	0	0.0	0	0	0.0	0	0	0.0	0	0	0.0	0	0	0.0
Off-Road Vehicle - ORV / All-Terrain Vehicle - ATV	2	0	0.0	2	0	0.0	0	0	0.0	0	0	0.0	0	0	0.0	0	0	0.0
Other	0	0	0.0	0	0	0.0	0	0	0.0	0	0	0.0	0	0	0.0	0	0	0.0
Truck/bus over 10,000 lbs.	14	14	100.0	1	1	100.0	0	0	0.0	1	1	100.0	3	3	100.0	9	9	100.0
Unknown	0	0	0.0	0	0	0.0	0	0	0.0	0	0	0.0	0	0	0.0	0	0	0.0
<b>Total</b>	<b>352</b>	<b>241</b>	<b>68.5</b>	<b>129</b>	<b>66</b>	<b>51.2</b>	<b>57</b>	<b>41</b>	<b>71.9</b>	<b>43</b>	<b>33</b>	<b>76.7</b>	<b>49</b>	<b>41</b>	<b>83.7</b>	<b>66</b>	<b>60</b>	<b>90.9</b>

Note: Restraint Use includes shoulder belt only used, lap belt only used, both lap and shoulder belts used, child restraint used, restraint failure, and helmet worn.

### 2017 - Restraints Worn Among Vehicle Drivers and Injured Passengers by Age

Age Group	Total Occupants			Fatalities			A - Suspected Serious			B - Suspected Minor			C - Possible Injury			No Injury		
	Total	Used Restraint	%	Total	Used Restraint	%	Total	Used Restraint	%	Total	Used Restraint	%	Total	Used Restraint	%	Total	Used Restraint	%
0 - 15	21	18	85.7	6	4	66.7	3	3	100.0	5	4	80.0	7	7	100.0	0	0	0.0
16 - 20	56	36	64.3	16	9	56.3	10	7	70.0	9	4	44.4	14	11	78.6	7	5	71.4
21 - 24	53	34	64.2	15	5	33.3	9	6	66.7	7	6	85.7	6	4	66.7	16	13	81.3
25 - 64	193	139	72.0	78	40	51.3	33	24	72.7	22	19	86.4	21	18	85.7	39	38	97.4
65 +	21	14	66.7	14	8	57.1	2	1	50.0	0	0	0.0	1	1	100.0	4	4	100.0
Unknown	8	0	0.0	0	0	0.0	0	0	0.0	0	0	0.0	0	0	0.0	0	0	0.0
<b>Total</b>	<b>352</b>	<b>241</b>	<b>68.5</b>	<b>129</b>	<b>66</b>	<b>51.2</b>	<b>57</b>	<b>41</b>	<b>71.9</b>	<b>43</b>	<b>33</b>	<b>76.7</b>	<b>49</b>	<b>41</b>	<b>83.7</b>	<b>66</b>	<b>60</b>	<b>90.9</b>

Note: Restraint Use includes shoulder belt only used, lap belt only used, both lap and shoulder belts used, child restraint used, restraint failure, and helmet worn.

# Drivers Tested Positive for Cannabinoid Drugs (continued)

## 5-Year Trend - Restraint Use Among Drivers

Restraint Use	2013			2014			2015			2016			2017		
	Drivers	Fatal Drivers	Injured Drivers	Drivers	Fatal Drivers	Injured Drivers	Drivers	Fatal Drivers	Injured Drivers	Drivers	Fatal Drivers	Injured Drivers	Drivers	Fatal Drivers	Injured Drivers
No belts available	0	0	0	0	0	0	0	0	0	0	0	0	0	0	0
Shoulder belt only used	0	0	0	0	0	0	0	0	0	1	1	0	1	1	0
Lap belt only used	0	0	0	0	0	0	1	1	0	0	0	0	1	1	0
Both lap & shoulder belts used	36	15	14	41	17	14	45	18	16	85	21	37	105	33	37
No belts used	24	20	3	22	15	7	24	21	3	28	23	3	24	18	6
Child restraint used	0	0	0	0	0	0	0	0	0	0	0	0	0	0	0
Child restraint not used, unavailable or improper use	0	0	0	0	0	0	0	0	0	0	0	0	0	0	0
Restraint failure	0	0	0	0	0	0	0	0	0	1	1	0	0	0	0
Restraint use unknown	10	5	4	13	7	5	15	7	2	24	13	8	29	13	11
Helmet worn	6	6	0	10	9	0	11	11	0	10	10	0	7	7	0
Helmet not worn	3	3	0	5	4	1	5	5	0	14	13	1	6	6	0
Helmet use unknown	0	0	0	1	1	0	1	1	0	2	1	1	1	1	0
Uncoded & errors	0	0	0	0	0	0	0	0	0	0	0	0	0	0	0
<b>Total</b>	<b>79</b>	<b>49</b>	<b>21</b>	<b>92</b>	<b>53</b>	<b>27</b>	<b>102</b>	<b>64</b>	<b>21</b>	<b>165</b>	<b>83</b>	<b>50</b>	<b>174</b>	<b>80</b>	<b>54</b>

## 5-Year Trend - Restraint Use Among Drivers Coded Drinking

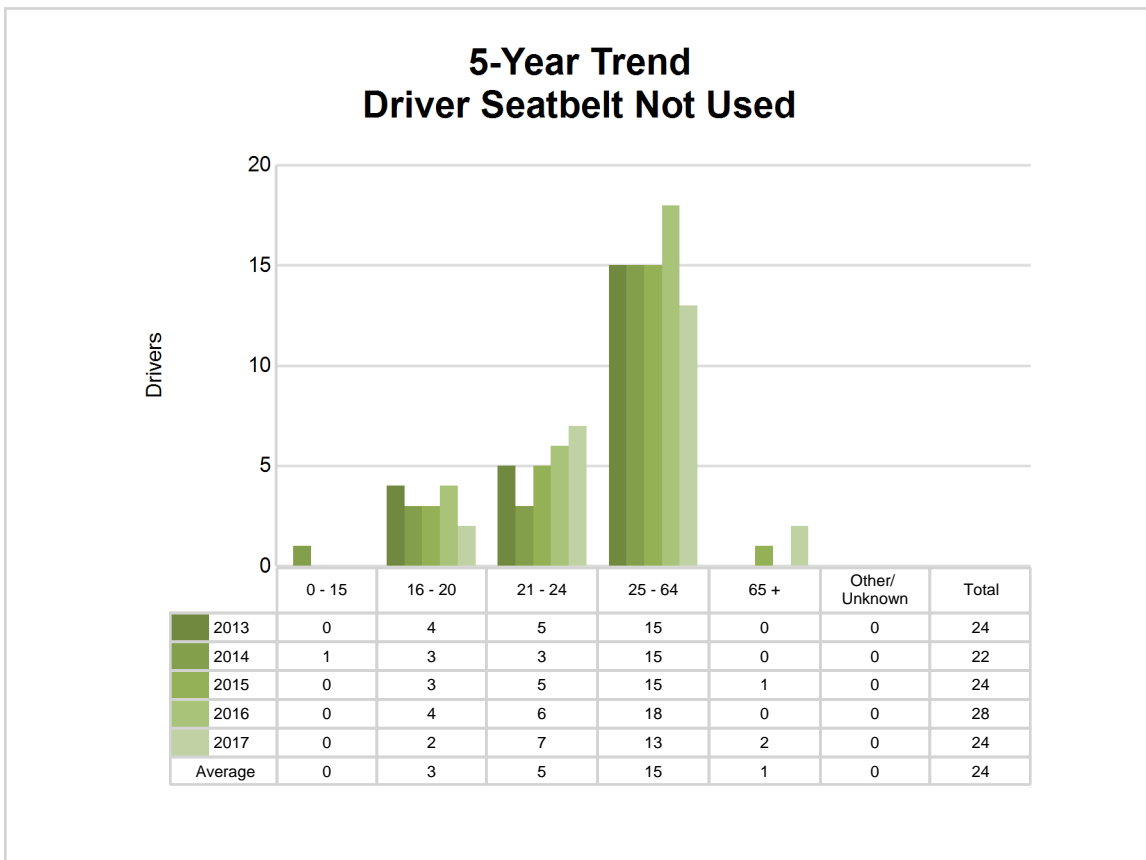
Restraint Use	2013			2014			2015			2016			2017		
	Drivers	Fatal Drivers	Injured Drivers	Drivers	Fatal Drivers	Injured Drivers	Drivers	Fatal Drivers	Injured Drivers	Drivers	Fatal Drivers	Injured Drivers	Drivers	Fatal Drivers	Injured Drivers
No belts available	0	0	0	0	0	0	0	0	0	0	0	0	0	0	0
Shoulder belt only used	0	0	0	0	0	0	0	0	0	0	0	0	0	0	0
Lap belt only used	0	0	0	0	0	0	1	1	0	0	0	0	0	0	0
Both lap & shoulder belts used	12	8	3	12	5	5	16	7	9	19	5	10	25	13	8
No belts used	15	14	0	10	7	3	12	11	1	14	13	1	13	9	4
Child restraint used	0	0	0	0	0	0	0	0	0	0	0	0	0	0	0
Child restraint not used, unavailable or improper use	0	0	0	0	0	0	0	0	0	0	0	0	0	0	0
Restraint failure	0	0	0	0	0	0	0	0	0	1	1	0	0	0	0
Restraint use unknown	5	4	1	8	5	3	9	4	1	11	7	4	17	8	6
Helmet worn	2	2	0	2	2	0	3	3	0	4	4	0	4	4	0
Helmet not worn	2	2	0	4	3	1	3	3	0	4	3	1	5	5	0
Helmet use unknown	0	0	0	0	0	0	0	0	0	1	0	1	0	0	0
Uncoded & errors	0	0	0	0	0	0	0	0	0	0	0	0	0	0	0
<b>Total</b>	<b>36</b>	<b>30</b>	<b>4</b>	<b>36</b>	<b>22</b>	<b>12</b>	<b>44</b>	<b>29</b>	<b>11</b>	<b>54</b>	<b>33</b>	<b>17</b>	<b>64</b>	<b>39</b>	<b>18</b>

# Drivers Tested Positive for Cannabinoid Drugs (continued)

## 5-Year Trend - Seatbelt Not Used Among Drivers by Age

Age Group	2013			2014			2015			2016			2017		
	Drivers	Fatal Drivers	Injured Drivers	Drivers	Fatal Drivers	Injured Drivers	Drivers	Fatal Drivers	Injured Drivers	Drivers	Fatal Drivers	Injured Drivers	Drivers	Fatal Drivers	Injured Drivers
0 - 15	0	0	0	1	1	0	0	0	0	0	0	0	0	0	0
16 - 20	4	2	2	3	1	2	3	2	1	4	2	2	2	2	0
21 - 24	5	4	1	3	3	0	5	5	0	6	6	0	7	4	3
25 - 64	15	14	0	15	10	5	15	13	2	18	15	1	13	10	3
65 +	0	0	0	0	0	0	1	1	0	0	0	0	2	2	0
Unknown	0	0	0	0	0	0	0	0	0	0	0	0	0	0	0
<b>Total</b>	<b>24</b>	<b>20</b>	<b>3</b>	<b>22</b>	<b>15</b>	<b>7</b>	<b>24</b>	<b>21</b>	<b>3</b>	<b>28</b>	<b>23</b>	<b>3</b>	<b>24</b>	<b>18</b>	<b>6</b>

Note: Seatbelt Not Used includes no belts available or no belts used.

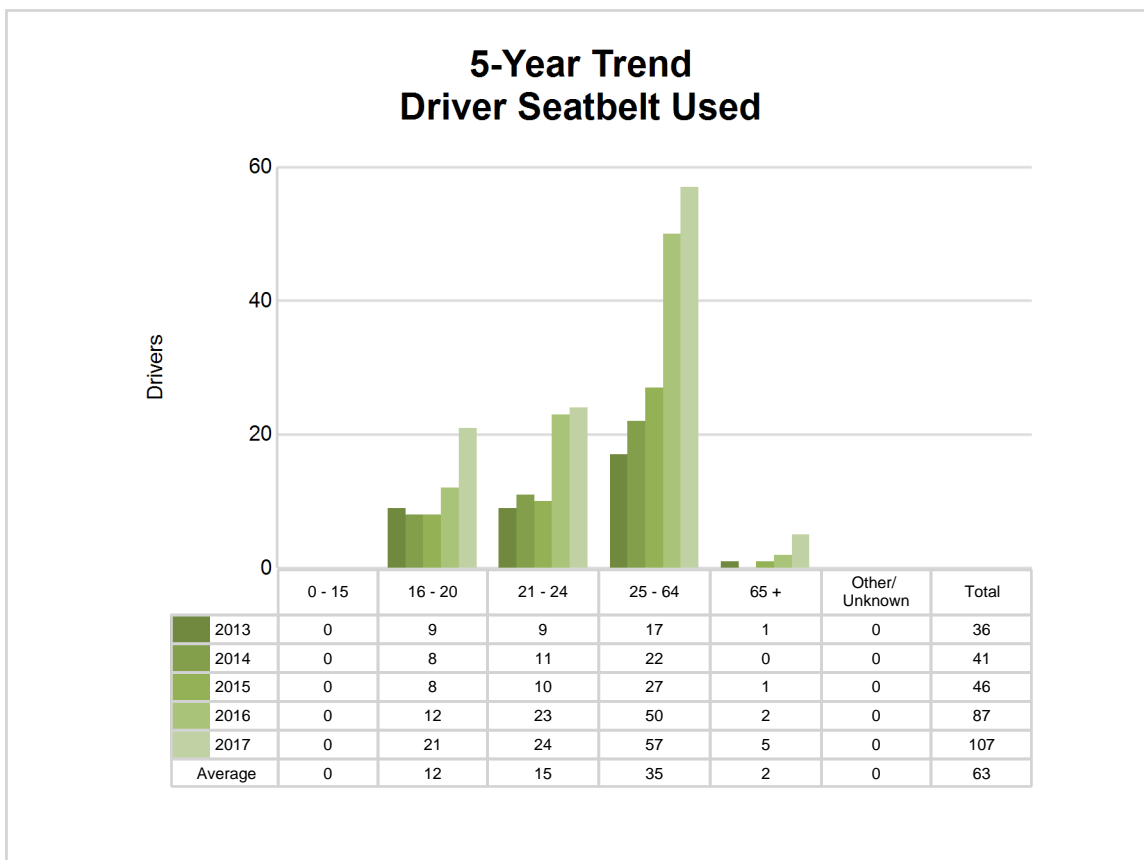




## 5-Year Trend - Seatbelt Used Among Drivers by Age

Age Group	2013			2014			2015			2016			2017		
	Drivers	Fatal Drivers	Injured Drivers	Drivers	Fatal Drivers	Injured Drivers	Drivers	Fatal Drivers	Injured Drivers	Drivers	Fatal Drivers	Injured Drivers	Drivers	Fatal Drivers	Injured Drivers
0 - 15	0	0	0	0	0	0	0	0	0	0	0	0	0	0	0
16 - 20	9	4	3	8	2	4	8	2	4	12	3	3	21	5	11
21 - 24	9	3	3	11	3	7	10	4	2	23	4	13	24	3	9
25 - 64	17	7	8	22	12	3	27	12	10	50	16	20	57	23	17
65 +	1	1	0	0	0	0	1	1	0	2	0	1	5	4	0
Unknown	0	0	0	0	0	0	0	0	0	0	0	0	0	0	0
<b>Total</b>	<b>36</b>	<b>15</b>	<b>14</b>	<b>41</b>	<b>17</b>	<b>14</b>	<b>46</b>	<b>19</b>	<b>16</b>	<b>87</b>	<b>23</b>	<b>37</b>	<b>107</b>	<b>35</b>	<b>37</b>

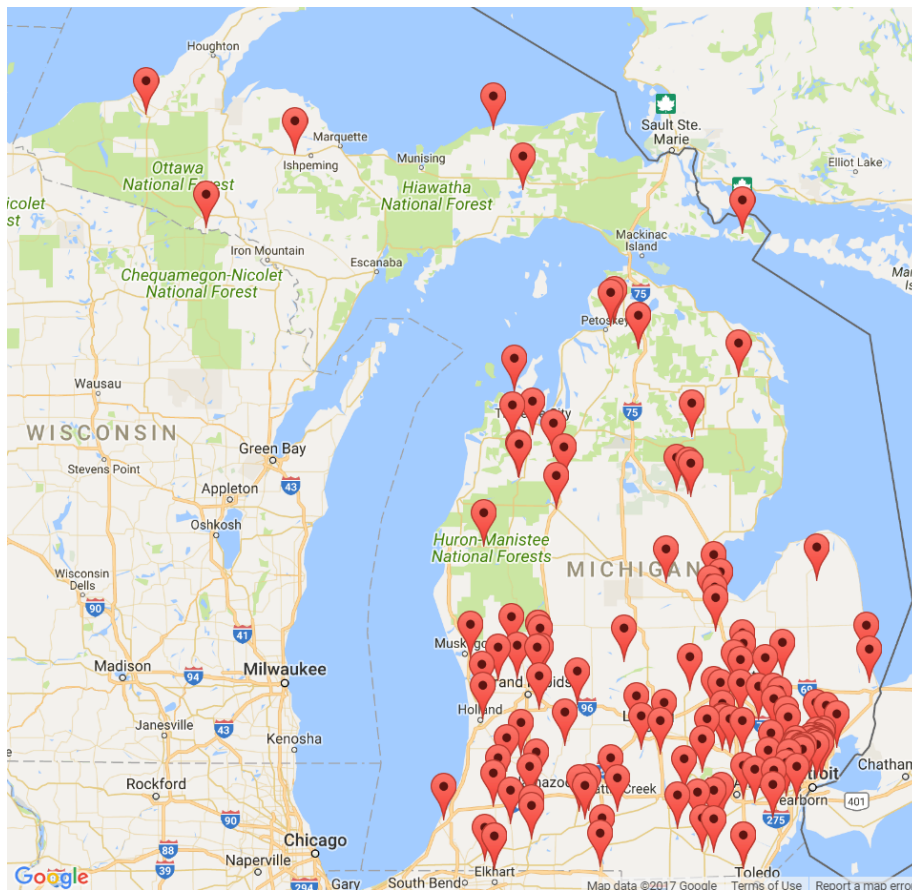
Note: Seatbelt Used includes shoulder belt only used, lap belt only used, both lap and shoulder belts used, and restraint failure.



## Drivers Tested Positive for Cannabinoid Drugs (continued)

### 5-Year Trend - Drivers in Crashes by Hazardous Action

Hazardous Action	2013		2014		2015		2016		2017	
	Total Drivers in Crashes	Drivers in Fatal Crashes	Total Drivers in Crashes	Drivers in Fatal Crashes	Total Drivers in Crashes	Drivers in Fatal Crashes	Total Drivers in Crashes	Drivers in Fatal Crashes	Total Drivers in Crashes	Drivers in Fatal Crashes
None	7	7	14	13	9	9	27	24	29	27
Speed too fast	23	20	21	20	23	23	33	30	32	27
Speed too slow	1	1	0	0	0	0	0	0	0	0
Failed to yield	2	2	2	1	4	4	8	7	12	10
Disregard traffic control	7	5	5	3	5	4	7	7	6	5
Drove wrong way	0	0	1	1	0	0	1	1	0	0
Drove left of center	5	4	6	5	10	9	13	12	13	11
Improper passing	0	0	3	3	0	0	3	3	0	0
Improper lane use	0	0	1	1	0	0	1	1	2	1
Improper turn	0	0	2	2	1	1	0	0	1	1
Improper/no signal	0	0	0	0	0	0	0	0	0	0
Improper backing	0	0	0	0	0	0	0	0	0	0
Unable to stop in assured clear distance	1	1	1	0	2	2	8	6	5	4
Other	8	8	5	3	11	11	12	7	10	5
Unknown	8	8	9	8	15	15	19	19	13	11
Reckless driving	7	7	11	9	10	9	14	12	23	17
Careless/negligent driving	10	8	11	9	12	10	19	13	28	17
Uncoded & errors	0	0	0	0	0	0	0	0	0	0
<b>Total</b>	<b>79</b>	<b>71</b>	<b>92</b>	<b>78</b>	<b>102</b>	<b>97</b>	<b>165</b>	<b>142</b>	<b>174</b>	<b>136</b>

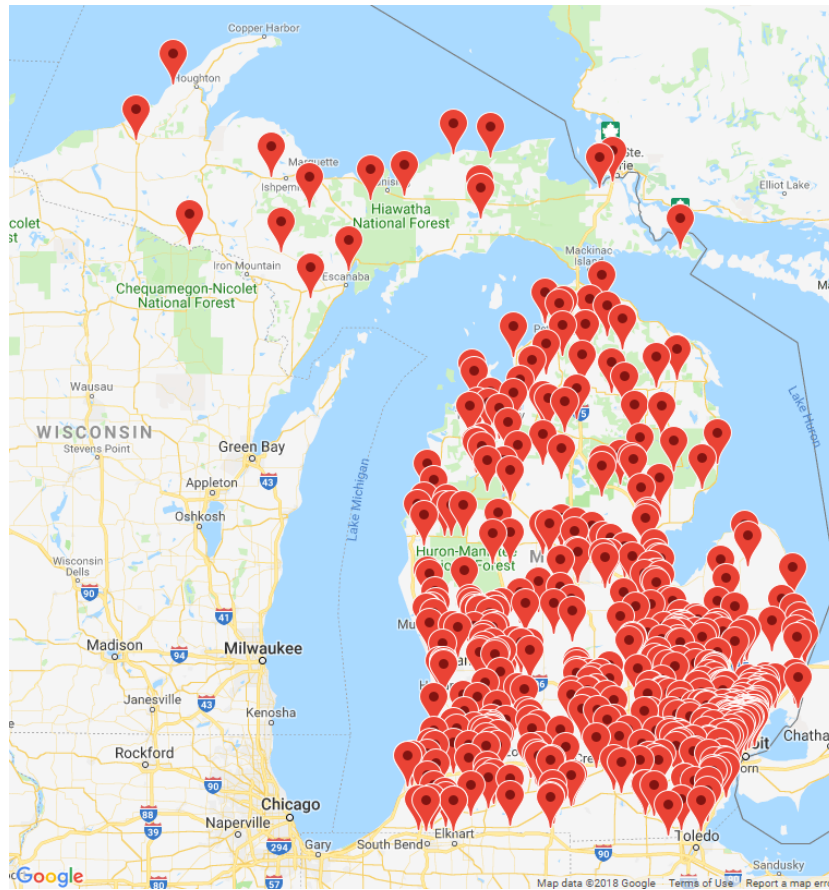


The picture above represents all 2017 drivers tested positive for cannabinoid drugs in fatal crashes in Michigan.

In 2017, there were 174 drivers tested positive for cannabinoid drugs in crashes in Michigan:

- 136 K - Fatal Crashes
- 14 A - Suspected Serious Injury Crashes
- 5 B - Suspected Minor Injury Crashes
- 7 C - Possible Injury Crashes
- 12 O - Property Damage Only/No Injury Crashes

## Drivers Tested Positive for Cannabinoid Drugs (continued)



The picture above represents all drivers tested positive for cannabinoid drugs in fatal crashes in Michigan from 2013 to 2017.

There have been 612 drivers tested positive for cannabinoid drugs in crashes in Michigan in the past five years:

- 524 K - Fatal Crashes
- 27 A - Suspected Serious Injury Crashes
- 18 B - Suspected Minor Injury Crashes
- 14 C - Possible Injury Crashes
- 29 O - Property Damage Only/No Injury Crashes

Office of Highway Safety Planning

Physical Address:  
7150 Harris Drive  
Dimondale, Michigan 48821

Mailing Address:  
P.O. Box 30634  
Lansing, Michigan 48909

Phone: (517) 284-3112  
Fax: (517) 284-3151

Find us on the web:  
[MichiganTrafficCrashFacts.org](http://MichiganTrafficCrashFacts.org)

